



# HOLLY HILLS NEIGHBORHOOD IMPROVEMENT PROJECT MAP

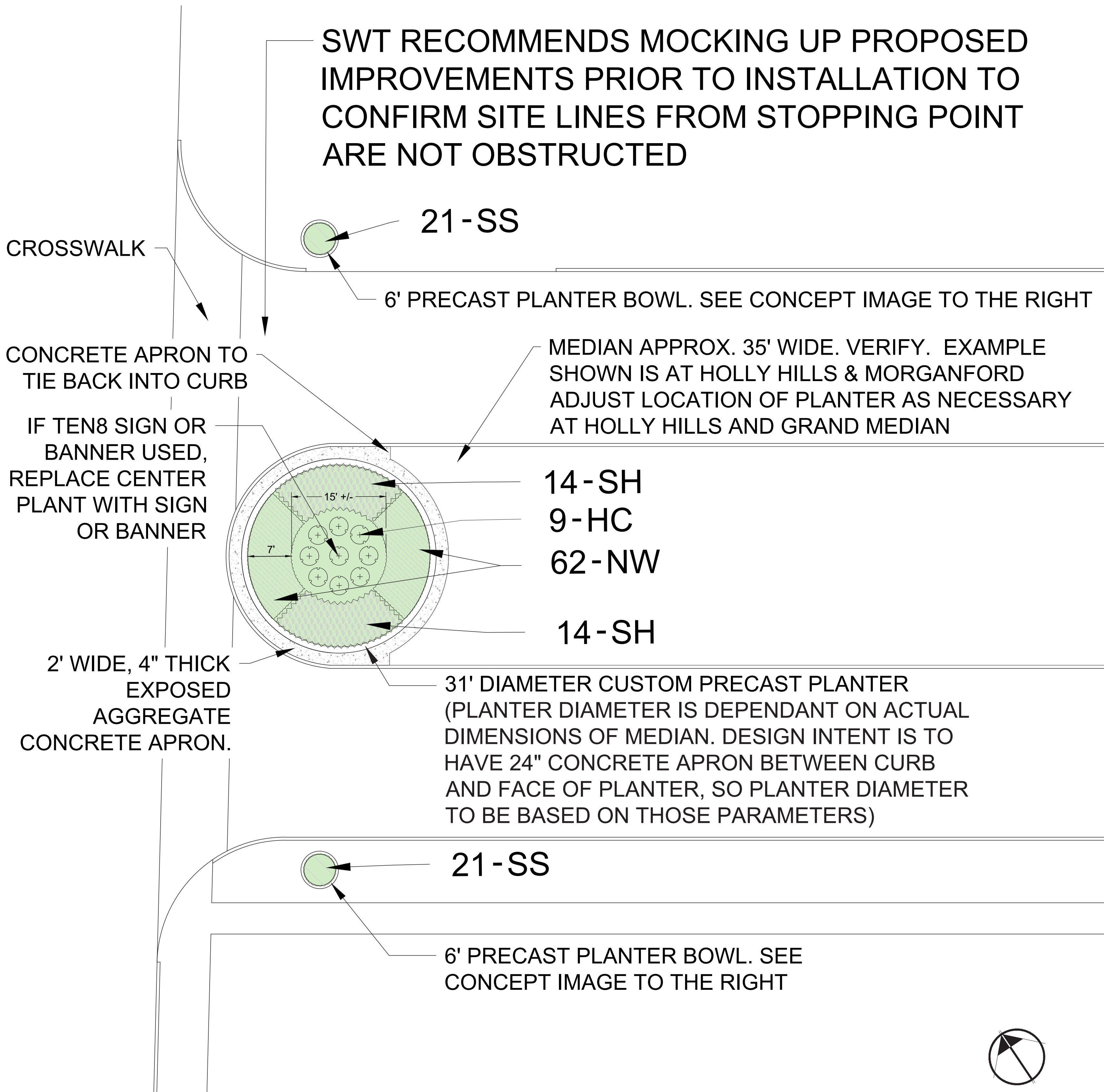
HOLLY HILLS SBD LANDSCAPE MASTER PLAN ST. LOUIS, MO

JANUARY 2024

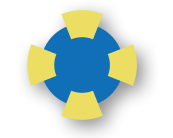




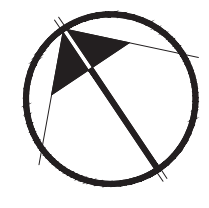
PLAN VIEW



LOCATION IN NEIGHBORHOOD (SEE PAGE 1)



PRIMARY NEIGHBORHOOD ENTRY POINT



COST ESTIMATE

Primary Neighborhood Entry Point  
Holly Hills & Morganford, Holly Hills & Grand

Precast Planters - 31' Diameter x 1' x 1' with Embossed Pattern with 4" concrete base, Planter Bowls 6' wide Bowl (size may vary depending on style and manufacturer)	<small>(Cost estimate for planters is not based on any manufacturer quote. Actual costs may vary based on style and manufacturer)</small>	<b>\$27,000</b>
Concrete Paving 4" exposed aggregate 2' Wide & Curbs where new concrete added		<b>\$8,000</b>
Plantings: 5 Gal Shrubs & 1 Gal Perennials, Seasonal Annuals and Soil in Planters 1' Deep, 2" Mulch in Planters		<b>\$12,000</b>
Demolition Allowance * Demo will vary per site		<b>\$14,000</b>
<b>Total</b>	<small>(Cost estimates are based on 2023 costs and do not include escalation or any permitting fees. Actual costs may vary depending on contractor)</small>	<b>\$61,000</b>

CONCEPT IMAGERY



PLANTER STYLE+SIZE MAY VARY DEPENDING ON AVAILABILITY AND NEIGHBORHOOD AESTHETIC PREFERENCES

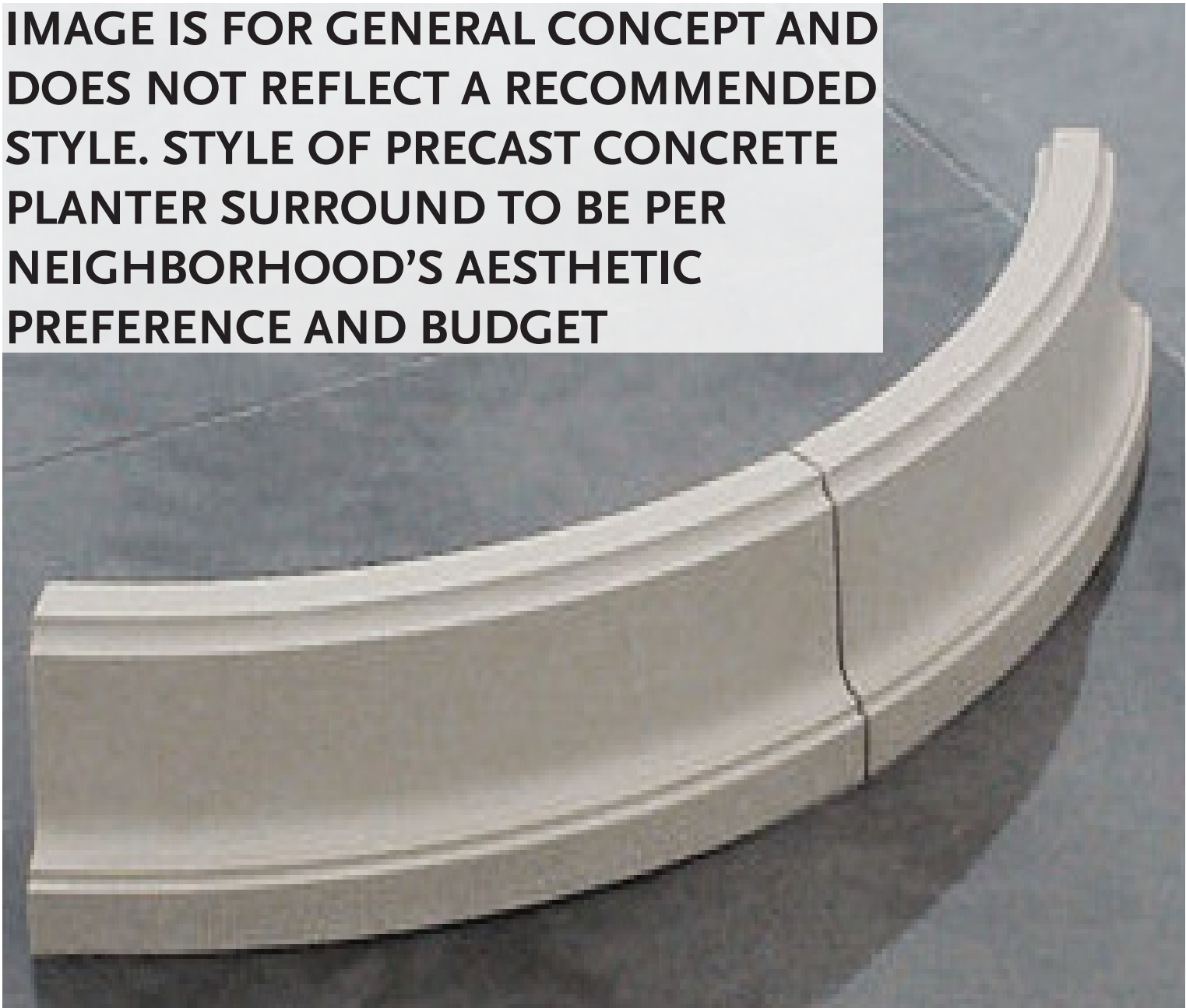


IMAGE IS FOR GENERAL CONCEPT AND DOES NOT REFLECT A RECOMMENDED STYLE. STYLE OF PRECAST CONCRETE PLANTER SURROUND TO BE PER NEIGHBORHOOD'S AESTHETIC PREFERENCE AND BUDGET

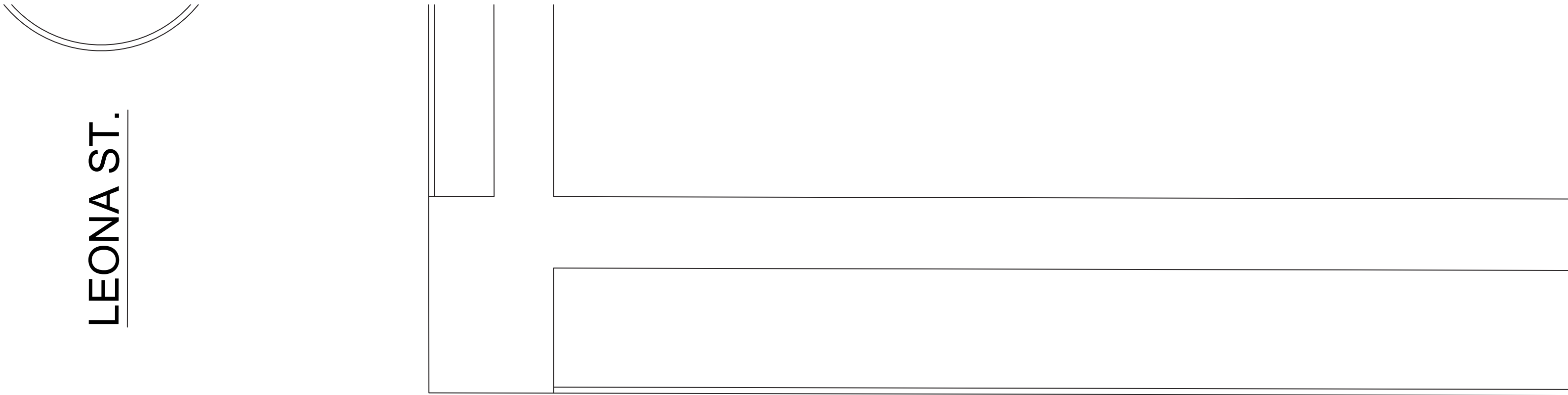
PLANT LIST

CODE	QTY	BOTANICAL NAME	COMMON NAME
<u>SHRUBS</u>			
HC	9	Hydrangea paniculata 'Bobo'	BOBO Panicle Hydrangea
<u>ANNUAL CHANGE OUT</u>			
SS	42	Seasonal Annuals	Seasonal Annuals
<u>GRASSES &amp; PERENNIALS</u>			
NW	62	Nepeta x 'Walker's Low'	Walker's Low Catmint
SH	28	Sporobolus heterolepis	Prairie Dropseed





PLAN VIEW

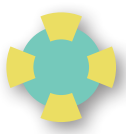


COST ESTIMATE

Circle Island Landscape  
Holly Hills & Leona

Concrete Paving 4" exposed aggregate 2' Wide & Curbs where new concrete added	\$8,000
Plantings: 5 Gal Shrubs & 1 Gal Perennials, Bulbs and Soil 1' Deep, 2" Mulch in Beds	\$14,000
Demolition Allowance	\$3,000
<b>Total</b> <small>(Cost estimates are based on 2023 costs and do not include escalation or any permitting fees. Actual costs may vary depending on contractor)</small>	<b>\$25,000</b>

LOCATION IN NEIGHBORHOOD (SEE PAGE 1)



CIRCLE ISLAND LANDSCAPE

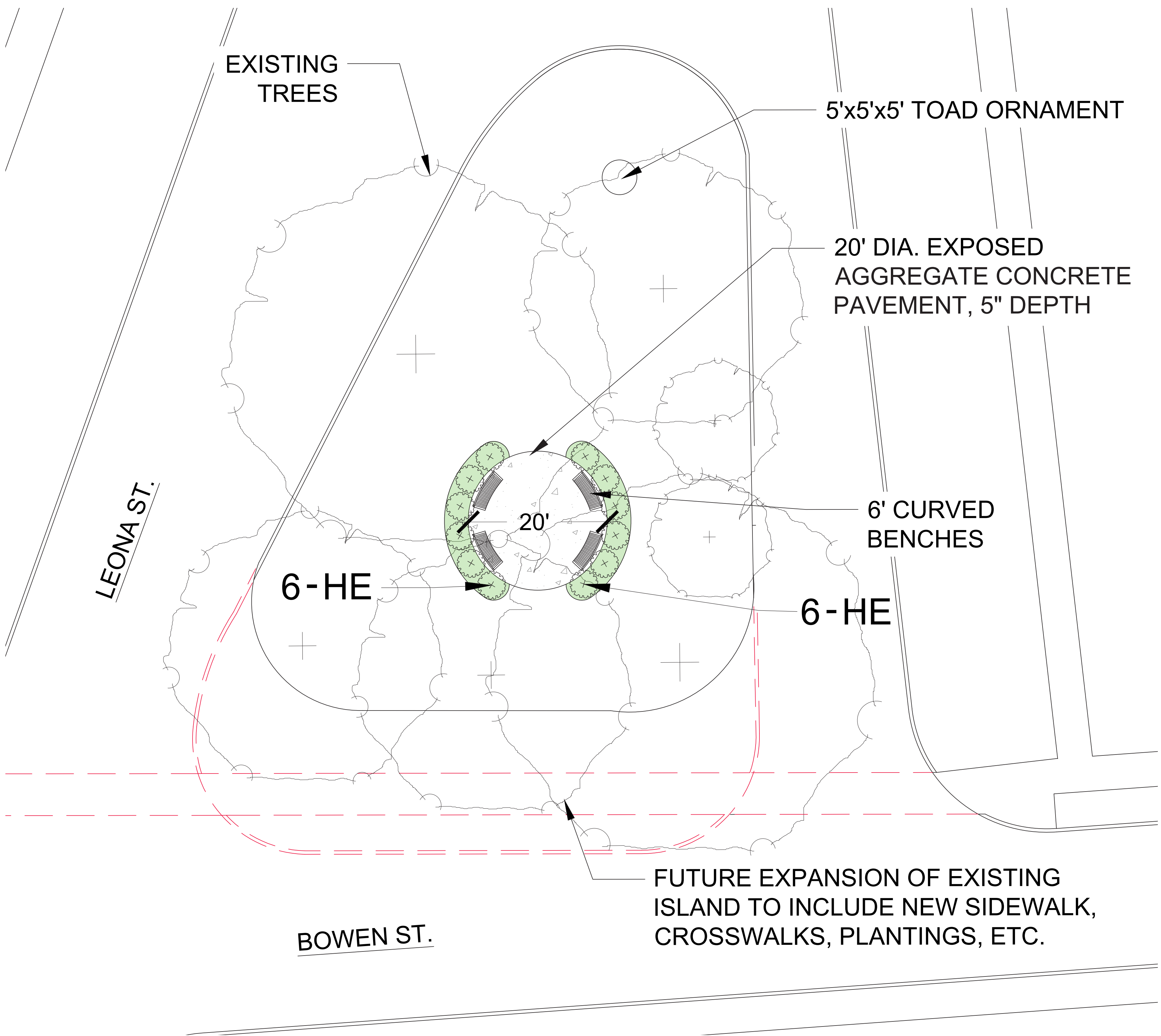
PLANT LIST

CODE	QTY	BOTANICAL NAME	COMMON NAME
<u>SHRUBS</u>			
AL	24	Aronia melanocarpa 'UCONNAM165'	Low Scape Mound® Black Chokeberry
<u>BULBS</u>			
NT	30	Narcissus x 'Tete-a-tete'	Tete-a-tete Daffodil
<u>GRASSES &amp; PERENNIALS</u>			
AM	29	Allium x 'Millenium'	Millenium Ornamental Onion
HH	36	Hemerocallis x 'Happy Returns'	Happy Returns Daylily
LB3	117	Liriope muscari 'Big Blue'	Big Blue Lilyturf
PL	36	Perovskia atriplicifolia 'Little Spire'	Little Spire Russian Sage





PLAN VIEW



BUDGET

Triangle Island Landscape Improvements

Leona and Bowen

Existing Island	
Concrete Paving 4" Exposed Aggregate Patio	\$5,000
Site Furnishings, (4) 6' curved bench with back (Potential Manuf.: Victor Stanley, Keystone Ridge), 5' x 5' x 5' Concrete Toad Sculpture (Cost estimate does not reflect quote from manufacturers. Actual costs may vary)	\$19,000
Plantings: 5 Gal Shrubs, Grass Seed, 1" Compost in Lawn, Soil 1' Deep, 2" Mulch in Beds	\$6,000
Demolition Allowance	\$4,000
<b>Subtotal</b> (Cost estimates are based on 2023 costs and do not include escalation or any permitting fees. Actual costs may vary depending on contractor)	<b>\$34,000</b>

Expansion of Island

Concrete Paving 4" Regular Concrete and Concrete curbs at new sidewalk area	\$14,000
Planting: Grass Seed, 6" Soil in new grass areas, 1" Compost	\$6,000
Detectable Warning Surfaces	\$3,000
Demolition Allowance	\$15,000
<b>Subtotal</b> (Cost estimates are based on 2023 costs and do not include escalation or any permitting fees. Actual costs may vary depending on contractor)	<b>\$38,000</b>
<b>Total for Existing Island and Expansion</b>	<b>\$72,000</b>

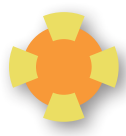
CONCEPT IMAGERY



PLANT LIST

CODE	QTY	BOTANICAL NAME	COMMON NAME
<u>SHRUBS</u>			
HE	12	Hydrangea macrophylla 'Bailmer'	Endless Summer® The Original Hydrangea

LOCATION IN NEIGHBORHOOD (SEE PAGE 1)

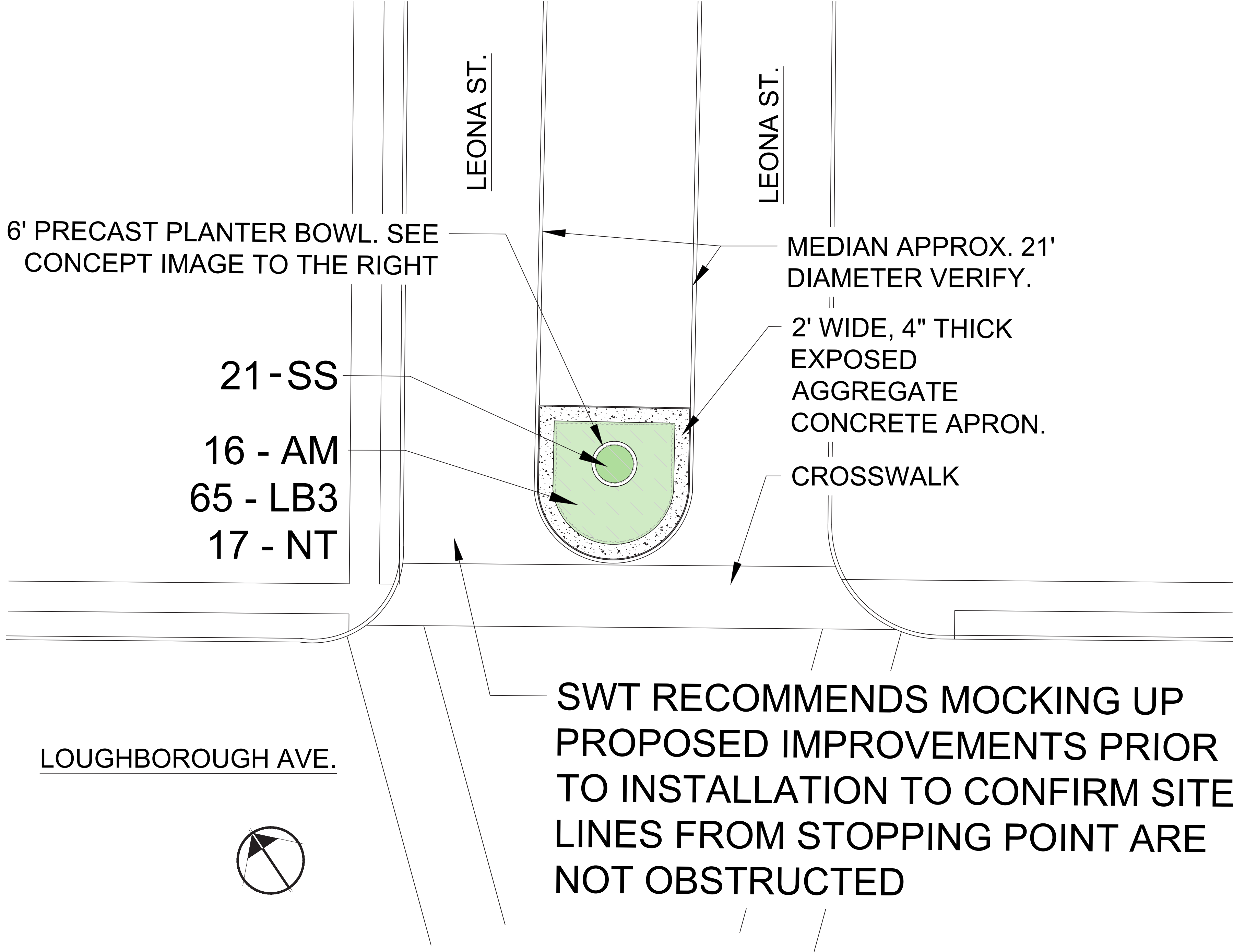


TRIANGLE ISLAND  
LANDSCAPE IMPROVEMENTS





PLAN VIEW



BUDGET

Secondary Neighborhood Entry Point  
Loughborough and Leona

Precast Planter Bowl 6' Wide (size may vary depending on style and manufacturer)	\$4,000
Concrete Curbs at new plant bed	\$2,000
Concrete Paving 4" Exposed Aggregate Concrete Apron	\$2,000
Plantings: 1 Gal Perennials, Seasonal Annuals, Bulbs and Soil 1' Deep, 2" Mulch in Beds	\$5,000
Demolition Allowance	\$1,000
<b>Total</b> (Cost estimates are based on 2023 costs and do not include escalation or any permitting fees. Actual costs may vary depending on contractor)	<b>\$14,000</b>

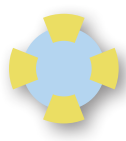
CONCEPT IMAGERY



PLANT LIST

CODE	QTY	BOTANICAL NAME	COMMON NAME
<u>ANNUAL CHANGE OUT</u>			
SS	21	Seasonal Annuals	Seasonal Annuals
<u>BULBS</u>			
NT	17	Narcissus x 'Tete-a-tete'	Tete-a-tete Daffodil
<u>GRASSES &amp; PERENNIALS</u>			
AM	16	Allium x 'Millenium'	Millenium Ornamental Onion
LB3	65	Liriope muscari 'Big Blue'	Big Blue Lilyturf

LOCATION IN NEIGHBORHOOD (SEE PAGE 1)



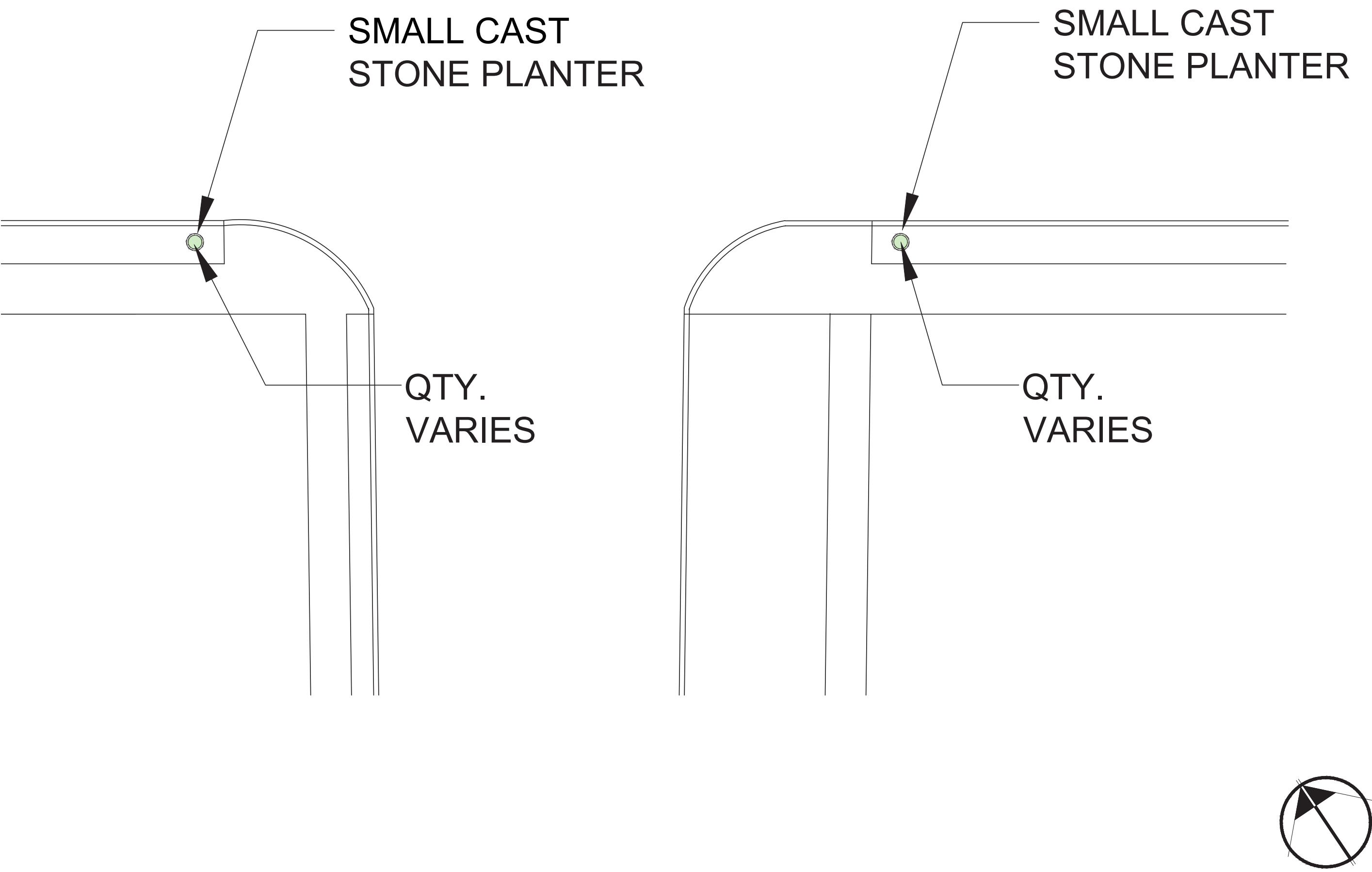
SECONDARY NEIGHBORHOOD  
ENTRY POINT IMPROVEMENTS





PLAN VIEW

\* FIELD LOCATE POTS AT BEST LOCATION BASED ON CORNER CONDITIONS. SOME LOCATIONS MAY NOT ACCOMMODATE TWO PLANTERS. COORDINATE PERMISSION FROM PROPERTY OWNERS / CITY AS REQUIRED.



LOCATION IN NEIGHBORHOOD (SEE PAGE 1)



SMALL PLANTERS

BUDGET

Smaller Planters  
Price for 2 Small Planters  
Multiple locations

Cast Stone Planters: Longshadow Garda Planter 19"H, 20" Wide (Or other as desired by neighborhood)	\$4,700
Plantings: Seasonal Annuals and Soil in Planter	\$100
Demolition Allowance * Amount will vary per location	\$200
<b>Total</b> <small>(Cost estimates are based on 2023 costs and do not include escalation or any permitting fees. Actual costs may vary depending on contractor)</small>	<b>\$5,000</b>

CONCEPT IMAGERY

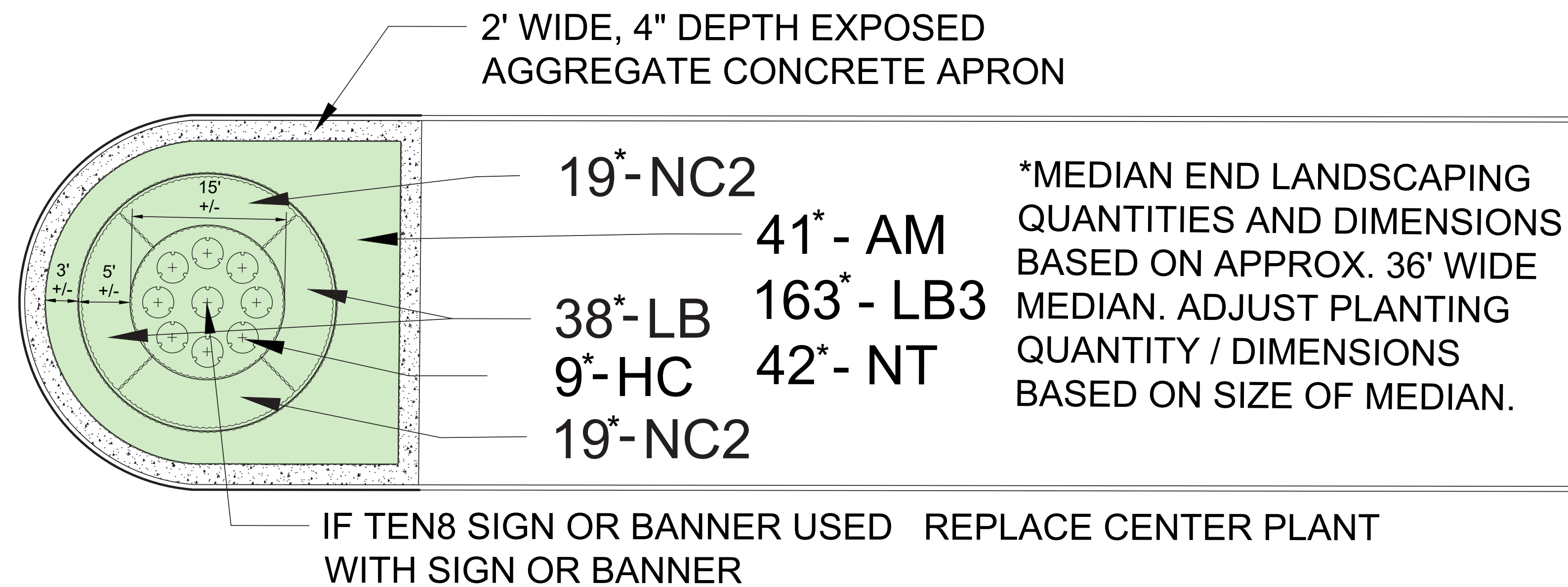


<u>CODE</u>	<u>QTY</u>	<u>BOTANICAL NAME</u>	<u>COMMON NAME</u>
<u>ANNUAL CHANGE OUT</u>			
SS	QTY. Varies	Seasonal Annuals	Seasonal Annuals



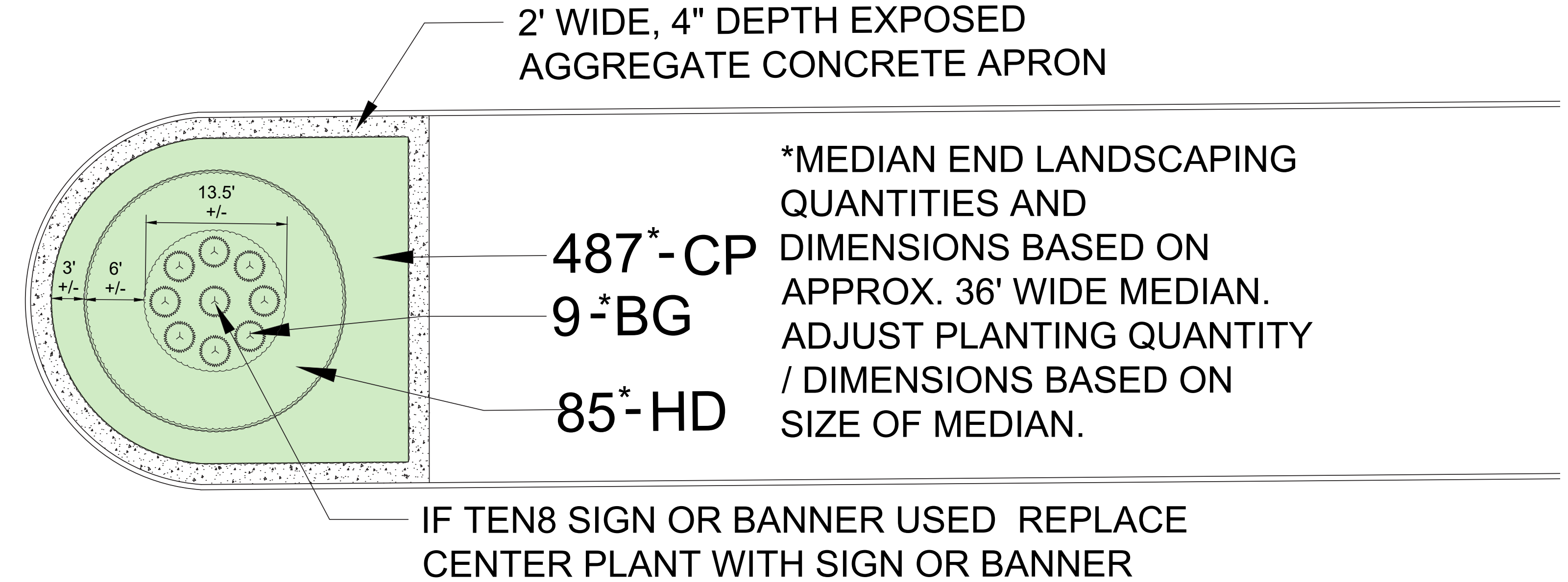


## PLAN VIEW - SUN/PART SUN LOCATIONS



SWT RECOMMENDS MOCKING UP PROPOSED IMPROVEMENTS AT EACH LOCATION PRIOR TO INSTALLATION TO CONFIRM SITE LINES FROM STOPPING POINT ARE NOT OBSTRUCTED

## PLAN VIEW - SHADE/PART SHADE LOCATIONS



SWT RECOMMENDS MOCKING UP PROPOSED IMPROVEMENTS AT EACH LOCATION PRIOR TO INSTALLATION TO CONFIRM SITE LINES FROM STOPPING POINT ARE NOT OBSTRUCTED

### PLANT LIST FOR SUN/PART SUN LOCATIONS

CODE	QTY	BOTANICAL NAME	COMMON NAME
<u>SHRUBS</u>			
HC	9	Hydrangea paniculata 'Bobo'	BOBO Panicle Hydrangea
<u>BULBS</u>			
NT	42	Narcissus x 'Tete-a-tete'	Tete-a-tete Daffodil
<u>GRASSES &amp; PERENNIALS</u>			
AM	41	Allium x 'Millenium'	Millenium Ornamental Onion
LB	38	Leucanthemum x superbum 'Becky'	Becky Shasta Daisy
LB3	163	Liriope muscari 'Big Blue'	Big Blue Lilyturf
NC2	38	Nepeta x 'Cat's Pajamas'	Cat's Pajamas Catmint

### BUDGET

#### Median End Landscaping

##### Multiple Locations

Concrete Paving 4" Exposed Aggregate 2' Wide & Curbs at new concrete	<b>\$8,000</b>
Plantings: 5 Gal Shrubs, 1 Gal Perennials, Plugs Ornamental Grass, Soil 1' Deep, 2" Mulch in Beds (Based on 36' wide median. Cost vary depending on width of median and qty. of plants)	<b>\$13,000</b>
Demolition Allowance * Amount will vary per location	<b>\$2,000</b>
<b>Total</b> <small>(Cost estimates are based on 2023 costs and do not include escalation or any permitting fees. Actual costs may vary depending on contractor)</small>	<b>\$23,000</b>

### PLANT LIST FOR SHADE/PART SHADE LOCATIONS

CODE	QTY	BOTANICAL NAME	COMMON NAME
<u>SHRUBS</u>			
BG	9	Buxus x 'Green Velvet'	Green Velvet Boxwood
<u>GRASSES &amp; PERENNIALS</u>			
CP	487	Carex pensylvanica	Pennsylvania Sedge
HD	85	Heuchera americana 'Dale's Strain'	American Alumroot

### LOCATION IN NEIGHBORHOOD (SEE PAGE 1)

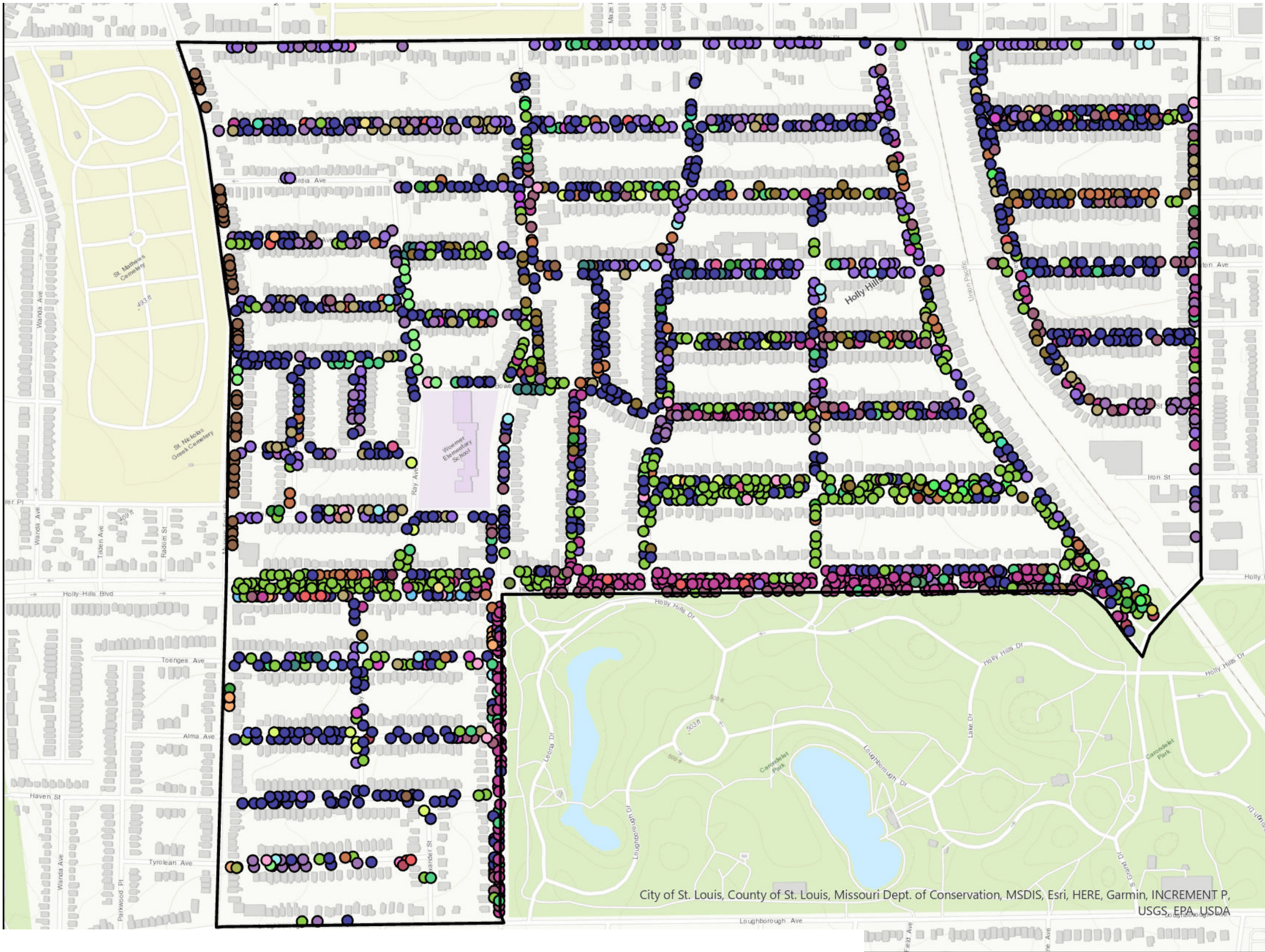


#### MEDIAN END LANDSCAPING

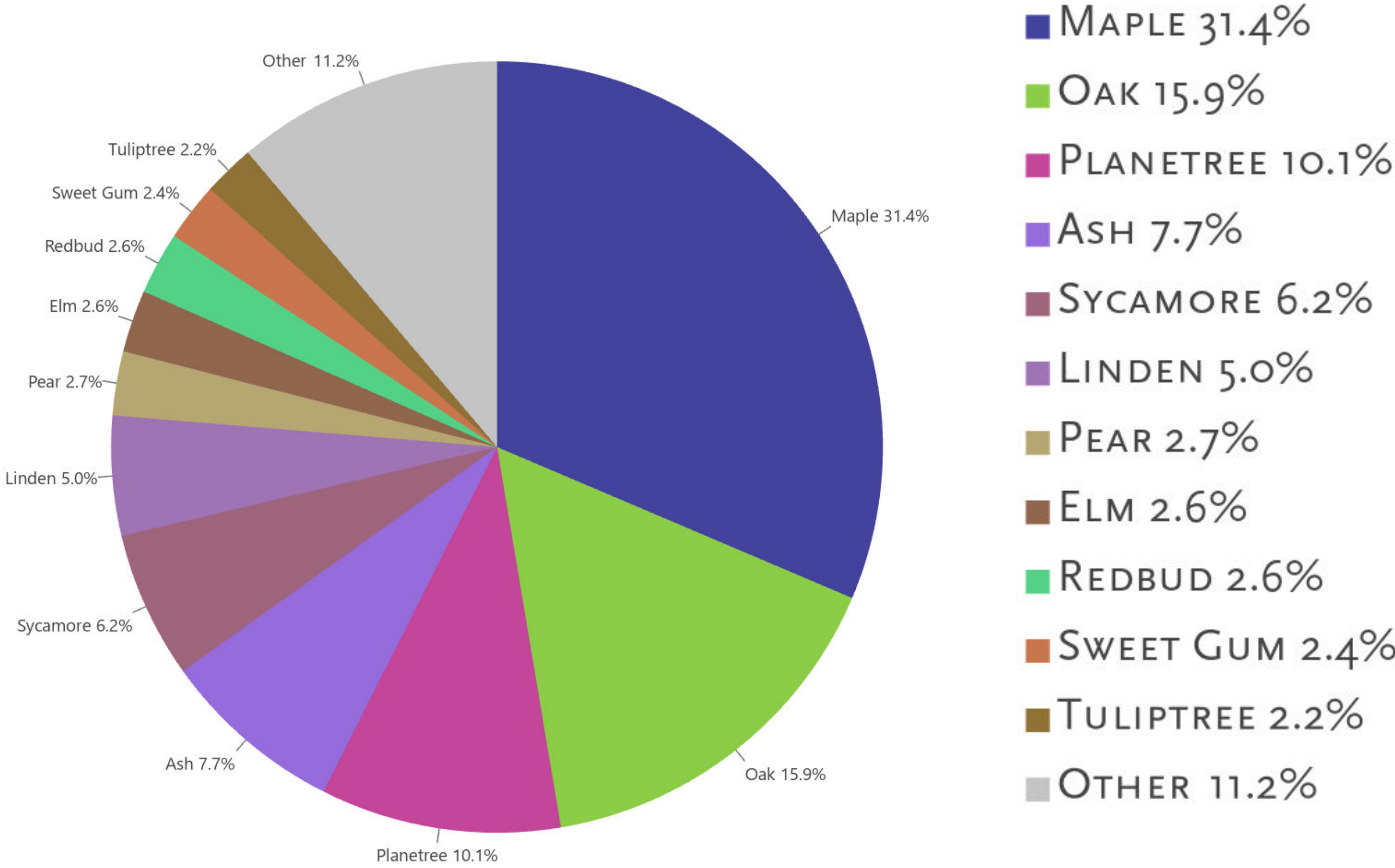




CURRENT NEIGHBORHOOD TREE INVENTORY  
(PER CITY OF ST. LOUIS GIS FILES)



TREE SPECIES



HOLLY HILLS SUGGESTED TREE LIST

Holly Hills Suggested Tree List  
(See Attached City Street Tree List)

Canopy

Littleleaf Linden	5.0%
Hybrid Elm	2.6%
Ginkgo (Male)	0.9%
Thornless Honeylocust	0.2%
Tuliptree	2.2%
Red Maple	31.4%
Sugar Maple	31.4%
White Oak	15.9%
Red Oak	15.9%
Swamp White Oak	15.9%
London Planetree	

Understory or Smaller Canopy

Redbud	2.6%
Serviceberry	0.9%
Black Gum	0.6%
American Hornbeam	0.3%
Flowering Dogwood	0.7%

## STREET TREE INFORMATION

INFORMATIONAL BULLETIN

Publication 11

The Street Tree List below represents common street tree species planted by the Forestry Division. The list is not inclusive to every street tree species found in the City of St. Louis or planted by the Forestry Division. The inclusion of a species on this list does not imply approval by the Forestry Division of that species for every street tree planting situation. Site characteristics, presence of existing trees and streetscape objectives help determine the most appropriate street tree species to be used. While suggestions are always welcome for street tree selection, the Forestry Division is responsible for determining what tree is planted.

COMMON NAME	SCIENTIFIC NAME	CULTIVARS
Baldcypress	<i>Taxodium distichum</i>	
Blackgum	<i>Nyssa sylvatica</i>	'Heritage'
Birch, River	<i>Betula nigra</i>	'Yamanashi'
Cherry, Japanese	<i>Prunus serrulata</i>	'Adirondack', 'Professor Springer', 'Spring Snow', 'Sugar Tyme'
Crabapple	<i>Malus sp</i>	
Dawn Redwood	<i>Metasequoia glyptostroboides</i>	
Elm, Hybrid	<i>Ulmus sp</i>	'Hemlock', 'Frontier', 'Pioneer', 'Princeton Sentry'
Ginkgo	<i>Ginkgo biloba</i>	
Hackberry	<i>Celtis occidentalis</i>	
Goldenrain tree	<i>Koeleruteria paniculata</i>	
Hornbeam, American	<i>Carpinus caroliniana</i>	
Hornbeam, European	<i>Carpinus betulus</i>	'Fastigata'
Kentucky Coffeetree	<i>Gymnocladus dioica</i>	
Linden, American	<i>Tilia americana</i>	'Redmond', 'Greenspire', 'Honey Silk', 'Shademoor', 'Skyline'
Linden, Littleleaf	<i>Tilia cordata</i>	
Lilac, Japanese Tree	<i>Syringa reticulata</i>	
Locust, Honey	<i>Gleditsia triacanthos</i>	
London Planetree	<i>Platanus x acerifolia</i>	
Maple, Amur	<i>Acer ginnola</i>	
Maple, Freeman	<i>Acer x freemanii</i>	'Autumn Blaze', 'Armstrong'
Maple, Hedge	<i>Acer campestre</i>	
Maple, Black	<i>Acer nigrum</i>	'Greencolumn', 'Emerald Queen', 'Red Sunset', 'October Glory', 'Green Mountain', 'Legacy', 'Skyrocket'
Maple, Norway	<i>Acer platanoides</i>	
Maple, Red	<i>Acer rubrum</i>	
Maple, Sugar	<i>Acer saccharum</i>	
Oak, Chinkapin	<i>Quercus muhlenbergii</i>	
Oak, English	<i>Quercus robur</i>	
Oak, Red	<i>Quercus rubra</i>	
Oak, Sawtooth	<i>Quercus acutissima</i>	
Oak, Swamp White	<i>Quercus bicolor</i>	
Oak, Willow	<i>Quercus phellos</i>	
Redbud	<i>Cercis canadensis</i>	
Serviceberry	<i>Amelanchier x grandiflora</i>	'Autumn Brilliance'
Tuliptree	<i>Liriodendron tulipifera</i>	'Greenhouse', 'Village Green'
Zelkova	<i>Zelkova serrata</i>	

The City of St. Louis Forestry Division plants street trees in the "tree lawn", the City easement along public streets that is typically between the curb and the sidewalk.

City residents can request a street tree at no charge for the tree lawn adjacent to their property by contacting the Citizens' Service Bureau at 622-4800 or at [www.stlouis-mo.gov](http://www.stlouis-mo.gov).

Property owners may also plant a street tree at their expense. A permit is required from the Forestry Division and must be obtained prior to planting.

The planting of street trees is desirable and in the interest of the health, welfare, comfort and general well-being of all St. Louisians, because of the positive environmental, social and economic benefits trees provide. New street trees need to be planted to sustain the City's street tree population as diseased and dangerous trees are removed. Many new street trees can be planted to enhance and expand the City's street tree population as well.

KEY CONSIDERATIONS WHEN DETERMINING  
TREE SPECIES TO PLANT

The following items are key considerations when determining which species of tree to plant in a particular location:

- Amount of available sun / shade
- Type of soil
- Type of drainage - well drained areas vs. poor drained areas
- Amount of available space
- Understory vegetation and amount of sunlight required
- Water / Maintenance requirements
- Amount of fruit/litter produced
- Salt / Urban condition tolerance

When the above requirements have been determined, diversification of tree species should be key factor in determining species of tree to plant, with the goal of targeting species with current low percentages in the neighborhood where appropriate.

